



Flight Plan & Site Survey

Created using **RPAS Wilco**[®]

Operation Name:	Mission 01-11-2023
Pilot Name:	██████████
Pilot Certificate:	██████████
Flight Start:	January 11, 2023 4:23 PM
Flight End:	January 11, 2023 6:23 PM
Flight Area (Latitude):	49° 5' 16.00" N (49.088)
Flight Area (Longitude):	122° 15' 60.00" W (-122.267)
Altitude - Radius:	Alt: 200 ft - Rad: 185.2 m (0.1 nm)
Airspace:	CONTROLLED
FIR - Contact:	CZVR - 604-586-4500
Weather:	10.0 Celsius - Rain, Overcast

Please ensure you received all required authorizations prior to flight.

Disclaimer

This Site Survey was created using RPAS Wilco by AIM Robotics. The flight plan contained is intended only for RPAS flights on the date/time and location specified. The user accepts all responsibility for the accuracy and completeness of the information contained.

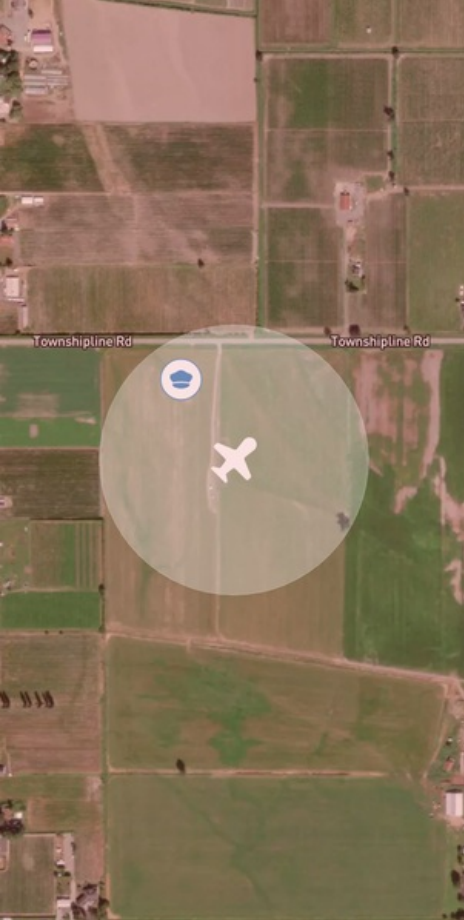
For the complete Terms & Conditions, see

<https://rpswilco.com/#/tnc>



Included

- Site Survey
- Obstacles (if available)
- Nearby Aerodromes
- Canadian Aviation Regulations
- GFA
- Aerodrome Supplements
 - METAR & TAF (if available)
 - NOTAMS
 - CFS

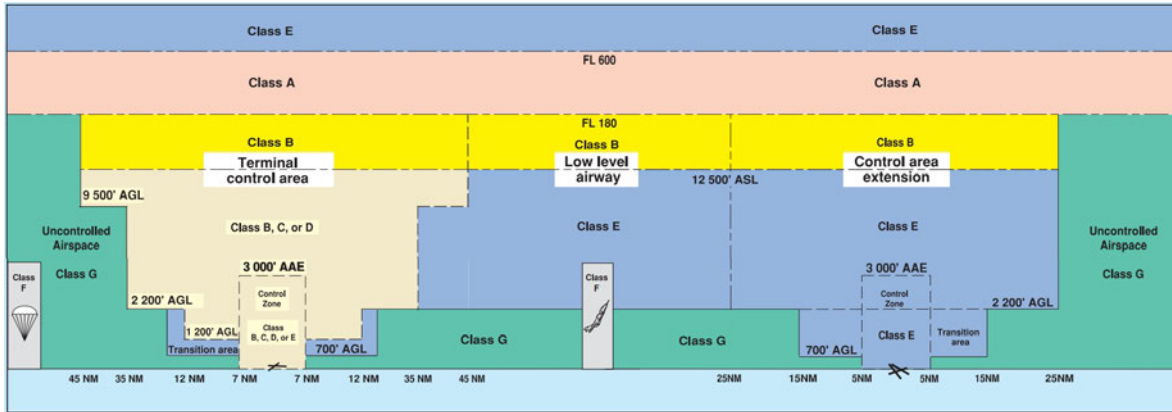
Flight Map



MAP Details

	Latitude	Longitude
 MODEL	49° 5' 16.00" N (49.088)	122° 15' 60.00" W (-122.267)
 Pilot	49° 5' 19.60" N (49.0888)	122° 16' 3.60" W (-122.2677)

Airspace Classification



Overlying Airspaces

Class	Name	Floor	Ceiling
C	Vancouver, BC TCA	6500MSL	8500MSL
C	Vancouver, BC TCA	8500MSL	9500MSL
C	Vancouver, BC TCA	4500MSL	6500MSL
E	V342 Airway	2200AGL	12500MSL
B	V342 Airway	12500MSL	18000MSL
C	Abbotsford CZ	SFC	4500MSL
C	Vancouver, BC TCA	9500MSL	12500MSL
B	Vancouver, BC TCA	12500MSL	18000MSL

Nearest Aerodromes & Distance from Operation

ABBOTSFORD (SUMAS MOUNTAIN) (CSM7 HELIPOINT Reg)	Lat: 49.105	Long: 122.197	5.422 KM	2.93 NM
ABBOTSFORD (CYXX AERODROME/HELIPOINT Cert)	Lat: 49.025	Long: 122.36	9.746 KM	5.26 NM
FORT LANGLEY (CBQ2 AERODROME Reg)	Lat: 49.168	Long: 122.557	22.932 KM	12.38 NM

Weather Information for Mission Day

Summary: Cloudy skies throughout the day with a chance of rain throughout the day.

Condition	Temperature	Feels Like	Precipitation	Visibility	Cloud Coverage	Wind Speed	Humidity
Rain, Overcast	10.0 Celsius	9.1 Celsius	100.0 %	16.0 Km	100.0 %	21.6 kph	79.2 %

Canadian Aviation Regulations

Division III — General Operating and Flight Rules

For full listing please visit <https://laws-lois.justice.gc.ca/eng/regulations/SOR-96-433/FullText.html#s-901.27>

Visual Line-of-sight

- **901.11 (1)** Subject to subsection (2) no pilot shall operate a remotely piloted aircraft system unless the pilot or a visual observer has the aircraft in visual line-of-sight at all times during flight.
- **(2)** A pilot may operate a remotely piloted aircraft system without the pilot or a visual observer having the aircraft in visual line-of-sight if the operation is conducted in accordance with a special flight operations certificate — RPAS issued under section 903.03.

Procedures

- **901.23 (1)** No pilot shall operate a remotely piloted aircraft system unless the following procedures are established:
 - **(a)** normal operating procedures, including pre-flight, take-off, launch, approach, landing and recovery procedures; and
 - **(b)** emergency procedures, including with respect to
 - **(i)** a control station failure,
 - **(ii)** an equipment failure,
 - **(iii)** a failure of the remotely piloted aircraft,
 - **(iv)** a loss of the command and control link,
 - **(v)** a fly-away, and
 - **(vi)** flight termination.
- **(2)** If the manufacturer of the remotely piloted aircraft system provides instructions with respect to the topics referred to in paragraphs (1)(a) and (b), the procedures established under subsection (1) shall reflect those instructions.
- **(3)** No pilot shall conduct the take-off or launch of a remotely piloted aircraft unless the procedures referred to in subsection (1) are reviewed before the flight by, and are immediately available to, each crew member.
- **(4)** No pilot shall operate a remotely piloted aircraft system unless the operation is conducted in accordance with the procedures referred to in subsection (1).

Site Survey

901.27 No pilot shall operate a remotely piloted aircraft system unless, before commencing operations, they determine that the site for take-off, launch, landing or recovery is suitable for the proposed operation by conducting a site survey that takes into account the following factors:

- **(a)** the boundaries of the area of operation;
- **(b)** the type of airspace and the applicable regulatory requirements;
- **(c)** the altitudes and routes to be used on the approach to and departure from the area of operation;
- **(d)** the proximity of manned aircraft operations;
- **(e)** the proximity of aerodromes, airports and heliports;
- **(f)** the location and height of obstacles, including wires, masts, buildings, cell phone towers and wind turbines;
- **(g)** the predominant weather and environmental conditions for the area of operation; and
- **(h)** the horizontal distances from persons not involved in the operation.

Operations at or in the Vicinity of an Aerodrome, Airport or Heliport

- **901.47 (1)** No pilot shall operate a remotely piloted aircraft at or near an aerodrome that is listed in the *Canada Flight Supplement* or the *Water Aerodrome Supplement* in a manner that could interfere with an aircraft operating in the established traffic pattern.
- **(2)** Subject to section 901.73 no pilot shall operate a remotely piloted aircraft at a distance of less than
 - **(a)** three nautical miles from the centre of an airport; and
 - **(b)** one nautical mile from the centre of a heliport.
- **(3)** No pilot shall operate a remotely piloted aircraft at a distance of less than three nautical miles from the centre of an aerodrome operated under the authority of the Minister of National Defence unless the operation is conducted in accordance with a special flight operations certificate — RPAS issued under section 903.03.

Records

- **901.48 (1)** Every owner of a remotely piloted aircraft system shall keep the following records:
 - **(a)** a record containing the names of the pilots and other crew members who are involved in each flight and, in respect of the system, the time of each flight or series of flights and
 - **(b)** a record containing the particulars of any mandatory action and any other maintenance action, modification or repair performed on the system, including
 - **(i)** the names of the persons who performed them,
 - **(ii)** the dates they were undertaken,
 - **(iii)** in the case of a modification, the manufacturer, model and a description of the part or equipment installed to modify the system, and
 - **(iv)** if applicable any instructions provided to complete the work.
- **(2)** Every owner of a remotely piloted aircraft system shall ensure that the records referred to in subsection (1) are made available to the Minister on request and are retained for a period of
 - **(a)** in the case of the records referred to in paragraph (1)(a), 12 months after the day on which they are created; and
 - **(b)** in the case of the records referred to in paragraph (1)(b), 24 months after the day on which they are created.
- **(3)** Every owner of a remotely piloted aircraft system who transfers ownership of the system to another person shall, at the time of transfer, also deliver to that person all of the records referred to in paragraph (1)(b).

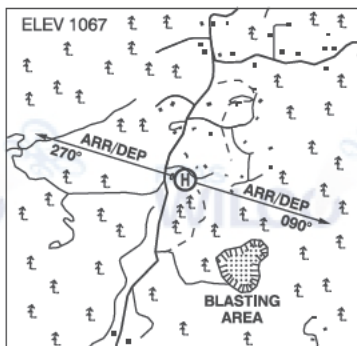
BRITISH COLUMBIA

AERODROME/FACILITY DIRECTORY

ABBOTSFORD (SUMAS MOUNTAIN) BC (Heli)

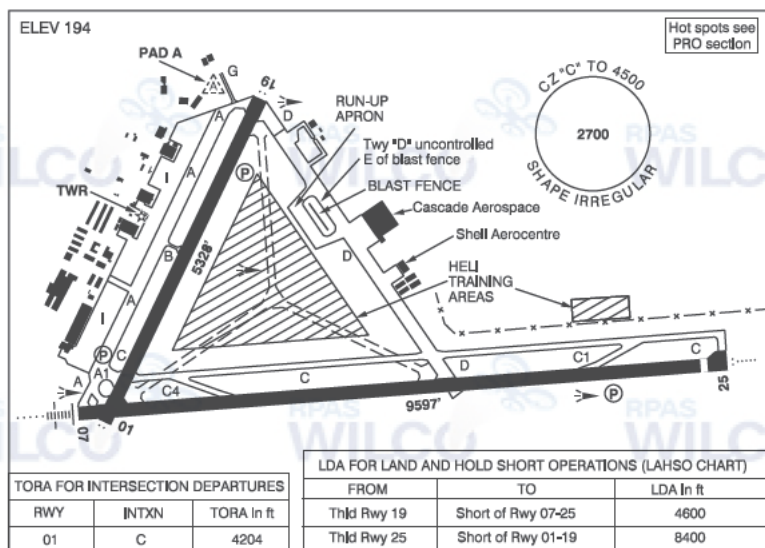
CSM7

REF	N49 06 18 W122 11 51 4.5NE 17°E (2011) UTC-8(7) Elev 1067' VTA A5004
OPR	Hydra Helicopters Inc. 604-309-8393 Reg PPR
PF	B-1 D-2,3,4,5,6
FLT PLN	Kamloops 866-WXBRIEF (Toll free within Canada) or 866-541-4101 (Toll free within Canada & USA)
FIC	
HELI DATA	FATO 60' x 60' CONC TLOF 60' x 60' CONC Safety Area 60' x 60'
RCR	Opr Day only
COMM	tfc 123.2 1NM 2100 ASL
ATF	
PRO	Arr/dep 090° or 270° fr heli to avoid overflight of built-up area and steep terrain
CAUTION	Extv tfc transiting E and W over the Fraser River. High trees S, W and N. Blasting area 2NM S. Acft tng area (CYA 182) 4NM E. CYXX CZ 1NM W.



ABBOTSFORD BC

CYXX



REF	N49 01 31 W122 21 36 2.2SW 17°E (2014) UTC-8(7) Elev 194' VTA A5004 LO2 HI3 T1 CAP RCAP
OPR	City of Abbotsford 604-855-1001 1230-0800Z± Cert
PF	A-1,2,3,6,7 C-4,5
CUST	AOE/15 888-226-7277 16-08Z±
FLT PLN	Pilots are to open/close VFR Flt Pln with Kamloops FIC via phone or Pacific rdo 122.5 when practicable.
FIC	Kamloops 866-WXBRIEF (Toll free within Canada) or 866-541-4101 (Toll free within Canada & USA)
ACC	Vancouver IFR 604-586-4590/4591 or 800-668-1333; IFR tng flts PPR ctc 604-586-4592 or 800-668-1333
WX	METAR H24. TAF H24, issue times: 00, 06, 12, 18Z.
SERVICES	Abbotsford Shell Aerocentre
FUEL	MG-1, 100LL, JA (CON S IP JA-1, FSII) 604-854-1964 by truck, self-serve VISA & Mastercard only 778-800-0132.
OIL	All
S	1,2,3,4,5
ARFF	DESIGNATED CAT 6 for all sked acft 20 seats and abv, all other acft 2 hr PN. Ctc 604-864-5544.
JASU	AC/DC 28V 400 amp min
PVT ADV	Abbotsford Shell Aerocentre 122.95 604-854-1964 or 877-270-2010
MIL CON	Abbotsford Shell Aerocentre 604-854-1964

BRITISH COLUMBIA

AERODROME / FACILITY DIRECTORY

ABBOTSFORD BC (Cont'd)

CYXX

RWY DATA	Rwy 07(069°)/25(249°) 9597x200 ASPH Thld 25 displ 295'. Rwy 01(009°)/19(189°) 5328x200 ASPH
RWY CERT	Rwy 07 RVR 1200(1/4sm)/Rwy 25 RVR 1200(1/4sm) AGN V Rwy 01/19 AGN IIIB
TWY CERT	Twy: B, G AGN II Twy D AGN IV
TWY	Twy D uncontrolled E of blast fence. Twy B rstd to acft with wingspans 78' or less. Reverse turns to exit Rwy 07 onto Twy C4 rstd to acft with wingspans 50' or less. Turns onto Twy A from Twy C rstd to acft with wingspans 171' or less. Turns from Twy A onto Twy C rstd to C-130 & smaller (blast issue). Turns west onto Twy C4 and east onto Twy C1 from Twy C rstd to acft with wingspans 133' or less. Twy G uncontrolled.
APRON	Ltd prkg and de-icing dur win ops, all wide body acft 2hr PN ctc ops 604-864-5544. Corporate itinerant prkg ctc Shell Aerocentre.
RCR	Opr Ltd win maint 1400-0730Z†, O/T 2 hrs PN call out chg. PPR dur win maint exc sked ops, altn or emerg. CRFI, PLR/PCN.
LIGHTING	01-AS(TE ME) P2, 19-AS(TE ME) P2, 07-AN(TE HI), 25-AO(TE HI) P3
COMM	
RCO	Cranbrook rdo 119.4 (RAAS) 07-15Z† Pacific rdo 122.5 (FISE) 126.7 (bcst)
ATIS	119.8 1-877-517-2847 15-07Z†
GND	121.8 15-07Z†
TWR	119.4 (inner) 121.0 (outer) 295.0 (V) 15-07Z† (emerg only 604-855-1199)
MF	MF and advsy svcs only provided over Canadian territory. Cranbrook rdo 119.4 295.0 07-15Z† CZ shape irregular 4500 ASL (CAR 602.98) (emerg only 250-426-6312)
PAL	Victoria Tml 132.7 (avail on gnd)
NAV	
NDB	XX 344 (M) N49 00 55 W122 29 17 WHITE ROCK WC 332 (L) N49 00 12 W122 45 01
ILS	IXX 109.7 (Rwy 07) RVR LOC reliable only within 10° either side of centreline.

BRITISH COLUMBIA

AERODROME / FACILITY DIRECTORY

ABBOTSFORD BC (Cont'd)

CYXX

PRO	<p>Rgt hand circuit Rwys 07 & 01 (CAR 602.96). Rwy 01/19, Twy B, C, C1 and C4 not avbl for acft taxiing when visibility below 1/2sm (CAR 602 96)</p> <p>NIGHT RESTRICTIONS: Turbo-jet, turbo-fan and turbo-prop tng not permitted fr 06-15Z±. All other night tng as authorized by the APM.</p> <p>Procedures for crossing the southern Strait of Georgia within Tml Class C airspace refer to Vancouver Intl, VTPC for Crossing the Southern Strait of Georgia.</p> <p>Pilots should refer to Canadian Airport Charts (CAC) to obtain details on established hot spots, prior to operating on maneuvering areas. CAC are available for free on the NAV CANADA website.</p> <p>ATS REQUIREMENTS: All VFR acft arriving, departing or transiting the Vancouver or Victoria Tower Class C or D airspace require a transponder code.</p> <ul style="list-style-type: none"> - All acft departing Vancouver or Victoria Intl (including Water Aerodrome) call Kamloops FIC at 866-541-4101 or PAC RDO 122.5 for code assignment at least 30 min prior to flight or file a VFR Flight Plan/Flight Itinerary. - All acft arriving Vancouver Intl (including Water Aerodrome) or transiting Vancouver or Victoria Control Zones obtain a code from one of the following ATS units: Vancouver Harbour, Nanaimo, Victoria Harbour, Boundary Bay, Langley, Abbotsford or Pitt Meadows, or call Kamloops FIC at 866-541-4101 or PAC RDO 122.5. - All acft arriving Victoria Intl from a non NAV CANADA site call Kamloops FIC at 866-541-4101 or PAC RDO 122.5 for code assignment at least 30 minutes prior to flight or file a VFR Flight Plan/ Flight Itinerary. <p>VFR ARR/DEP ROUTES: See VTPC</p>
HELI	<p>When assigned, follow heli routes as depicted on the Heli VTPC.</p> <p>East and McCallum Routes: not above 700 ASL between airport and McCallum Rd. Dep/arr S & SW as cleared by ATC.</p> <p>Heli tng areas day use only. Infield heli tng area, remain at least 400' east of Rwy 01/19 and 400' N of Twy C, 700 ASL & below, etc ATC for heli circuit procedures.</p>
CAUTION	<p>Numerous obsts in heli tng areas. Parachute area aprx 5NM NNE of aprt. Tall vehicles on road S Thld 01; Ngt ops must use PAPI.</p>

BRITISH COLUMBIA

AERODROME/FACILITY DIRECTORY

FORT LANGLEY BC

CBQ2

REF	N49 10 04 W122 33 27 Adj 17°E (2014) UTC-8(7) Elev 33' VTA A5004	
OPR	Fort Langley Avn 604-888-1922 PPR Reg	
PF	A-1 C-2,3,4,5 D-6	
FLT PLN		
FIC	Kamloops 866-WXBRIEF (Toll free within Canada) or 866-541-4101 (Toll free within Canada & USA)	
SERVICES		
FUEL	100LL, JA	
S	1,4,5	
RWY DATA	Rwy 08(082°)/26(262°) 5510X60 ASPH	
RCR	Opr 604-888-1922 Ltd win maint	
COMM		
ATF	tfc 122.725 2NM 1500 ASL	
NAV		
VOR	PITT MEADOWS YPK 112.4 N49 12 57 W122 42 54 (44')	
PRO	Rgt hand circuits Rwy 26 (CAR 602.96). Circuit hgt 1000 ASL. No training flights. Avoid overflight of community to W. Procedures for crossing the southern Strait of Georgia within Tml Class C airspace refer to Vancouver Intl, VTPC for Crossing the Southern Strait of Georgia.	
CAUTION	Trees to 80 AGL along N side	